

MEASURE: *LENGTH* ( more than 81) x *DEPTH* (46 to 50)

INCREMENTO POR ACABADO BRILLO  
FINISHING SHINE INCREASE

### POSSIBILITY TO INTEGRATING A SOLID SURFACE TOWER RAIL ON THE SAME COUNTERTOP

ORIFICIOS DE GRIFO OPCIONALES  
OPTIONAL TAP HOLES

Technical drawing illustrating the dimensions and clearances for a sink installation. The drawing shows a top-down view of a rectangular sink with a central circular drain.

**Dimensions and Clearances:**

- Overall Width:** Indicated as  $>293$  mm.
- Overall Height:** Indicated as  $>460$  mm, with a note: "de 460 hasta 500" / "460 to 500".
- Drain Diameter:** Indicated as  $444$  mm.
- Distance from Sink Edge to Drain Center:** Indicated as  $303$  mm.
- Distance from Sink Edge to Countertop Edge:** Indicated as  $>71$  mm, with a note: "Distancia mínima al borde de la encimera" / "Minimum distance to the edge of the countertop".
- Distance from Sink Edge to Wall:** Indicated as  $70$  mm.
- Distance from Sink Edge to Wall (Alternative):** Indicated as  $222$  mm.
- Distance from Sink Edge to Wall (Alternative):** Indicated as  $45$  mm.
- Distance from Sink Edge to Wall (Alternative):** Indicated as  $16$  mm.
- Distance from Sink Edge to Wall (Alternative):** Indicated as  $80$  mm.
- Distance from Sink Edge to Wall (Alternative):** Indicated as  $810$  mm, with a note: "mas de 810" / "more than 810".
- Distance from Sink Edge to Wall (Alternative):** Indicated as  $810$  mm, with a note: "mas de 810" / "more than 810".
- Distance from Sink Edge to Wall (Alternative):** Indicated as  $810$  mm, with a note: "mas de 810" / "more than 810".

**Labels:**

- A:** Label for the overall width dimension.
- B:** Label for the overall height dimension.
- B':** Label for the distance from the sink edge to the wall.
- A':** Label for the distance from the sink edge to the wall.
- \*** Label for the distance from the sink edge to the wall.
- R10:** Label for the radius of the sink edge.

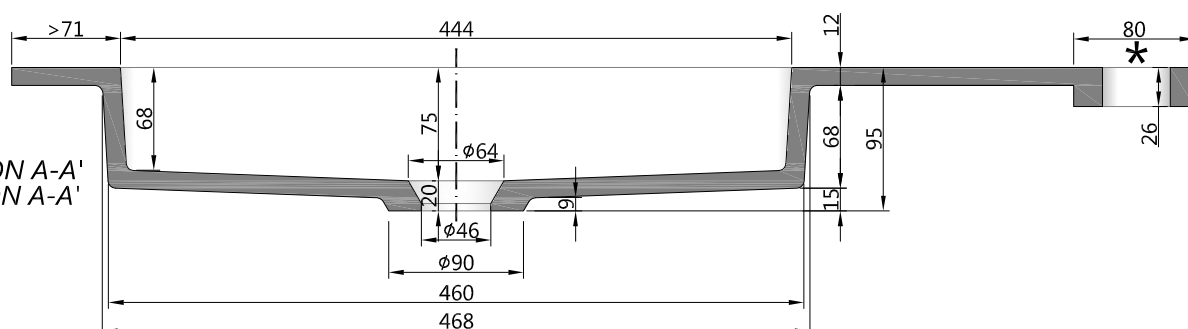
*Escala 1/5    Unidades en mm*  
*Escale 1/5    Units in millimeters*

Departamento Técnico

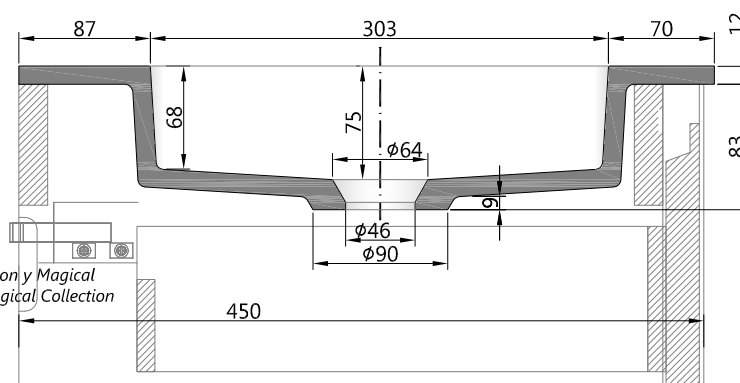


Mibaño<sup>®</sup> design

SECCIÓN A-A'  
SECTION A-A'



SECCIÓN B-B'  
SECTION B-B'



*Ejemplo Sección en Colección Perfection y Magical*  
*Example Section in Perfection and Magical Collection*